



WOMEN WELFARE HYGIENIC PRODUCTS

AN ISO & CE Certified

MSME CERTIFIED

GEM Registered Supplier



Wisdom For Your Life

Sanitary Napkin Incinerator with Separate Smoke Control Unit

Wall Mountable & Front loading Red Color
fully Automatic machine





Burning Capacity: 200 PADS/Day

180 to 200 Pads per day.

10-12 pads per cycle within 15 to 20 minutes.

** Insert up to 6 pads at a time.

Burning Capacity
180-200
PADS/DAY


10-12
PADS/CYCLE



Dimensions

Incinerator: 255 mm x Breadth-255 mm x Height-450 mm
 SCU: Length-250 mm x Breadth-250 mm x Height-200 mm,



Machine Features & Specification

01 Seprate Smoke control unit

02 Napkin Drop Point

03 Ash Collection Tray

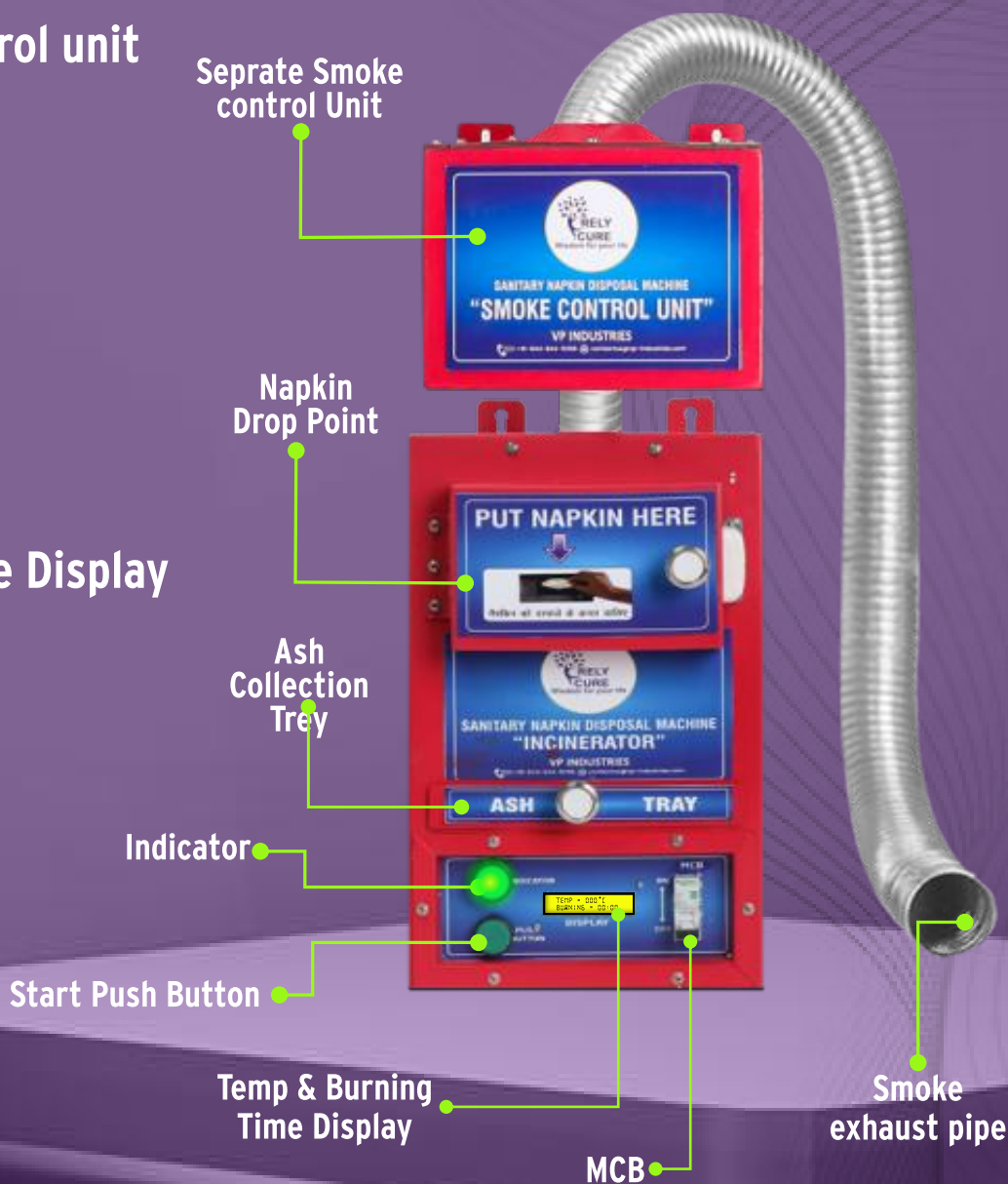
04 Indicator

05 Start Push Button

06 Temp & Burning Time Display

07 Smoke exhaust pipe

08 MCB Control



Operating Mechanism

Instruction for use:

- 01): Connect the unit with supply through **16 AMP** plug.
- 02): Turn "**ON**" MCB to start the machine.
- 03): Open the door & put the used napkin in drop point
- 04): Close the loading door properly
- 05): Press "**PUSH**" button for burn napkins
- 06): Wait for 15-20 minutes for burning napkin
- 07): Machine will shutdown automatically
(**Auto turn off feature**)
- 08): Ash collection tray for easy cleaning

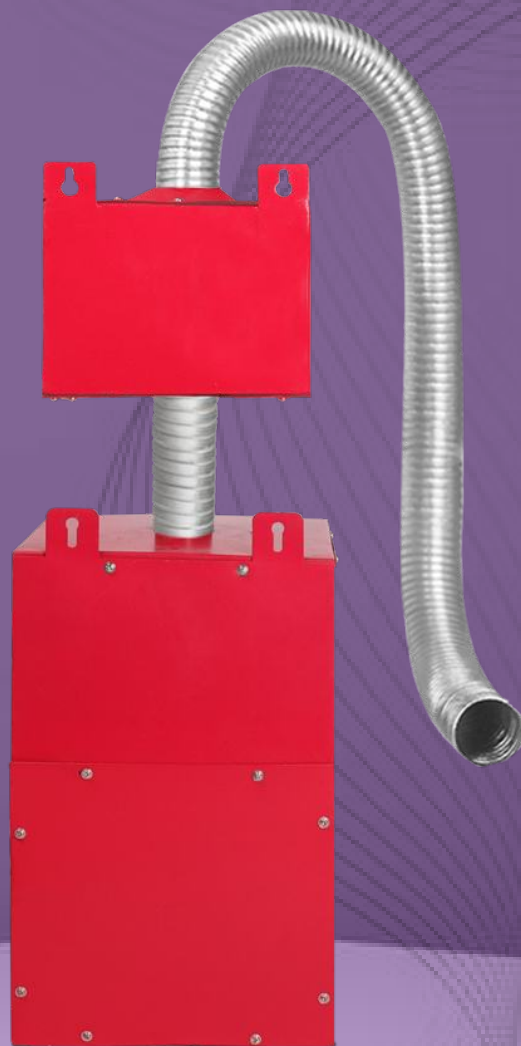
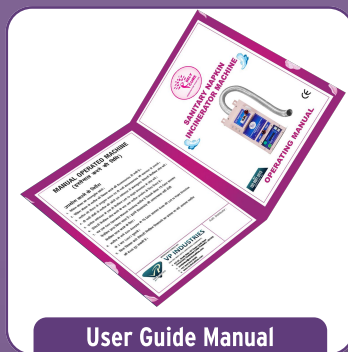
Electric Socket
board (16 Amp)

Put Your
Napkin here



Easy Wall Mountable Using Screw

Box Component & Accessories:



More Information



Mode Of Function	Electronically Operated, Fully Automatic
Separate Smoke Control	Two Activated Carbon Ceramic Blanket Filter For Filtration Of Smoke Emission And Odour Control. (With Exhaust Fan)
Electrical Part	1000W Ceramic Heater, Power Supply 230v With Safety MCB (16Amp), Indicator, Push Button,
Machine Functioning	Burn Used Sanitary Napkins To Sterile Ash And Stop Automatically (Auto Turn Off Feature), Easy Removing Ash Collecting Tray Ensures Cleanliness.
Micro Controller	Provided Automatic Digital Display Controller To See Actual Set Timer And Temperature
Burning Waste	Completely Burn The Solid Napkin, Residue Ash Per Napkin Less Them 1 Milligram
Temperature	Minimum Burning Temperature 400 Degree Inner Burning Chamber And Skin Temperature Of The Unit Under Operation 16°C
Material Of Thermal Insulation	Double Thermal Insulation For Extra Protection Of Ceramic Fibre Board (Thickness: 25mm) & Glafibre Blanket (Density 64)
Machine Material	Mild Steel Body With Epoxy Anti Rust Proof Powder Coated For Superior Finish (DFT 100 Micron
Emission Outlet Pipe Location	Top Of Machine (To Be Supplied Along With Machine 2 Mtr.)
Warranty	12 Months Standard Brand Warranty
Type Of Packaging	Packing Of Thermocol And Carton Cardboard Fitment Box
Easy To Installtion	With The Help Of Mounting Accessories Provided , Hang The Machine On Wall & Start Collecting The Napkins.
Customer Support	24x7 Customer Support



*Thanks for
connecting, us...*

Office & Manufacturing Unit: VP INDUSTRIES.

**A0-91, Amrit Steel Compound, South Side Industrial
Area, Ghaziabad-201001**

AN ISO & CE Certified

MSME CERTIFIED

GEM Registered Supplier

 **+91-8512895000**



 **+91-9560532288**

