

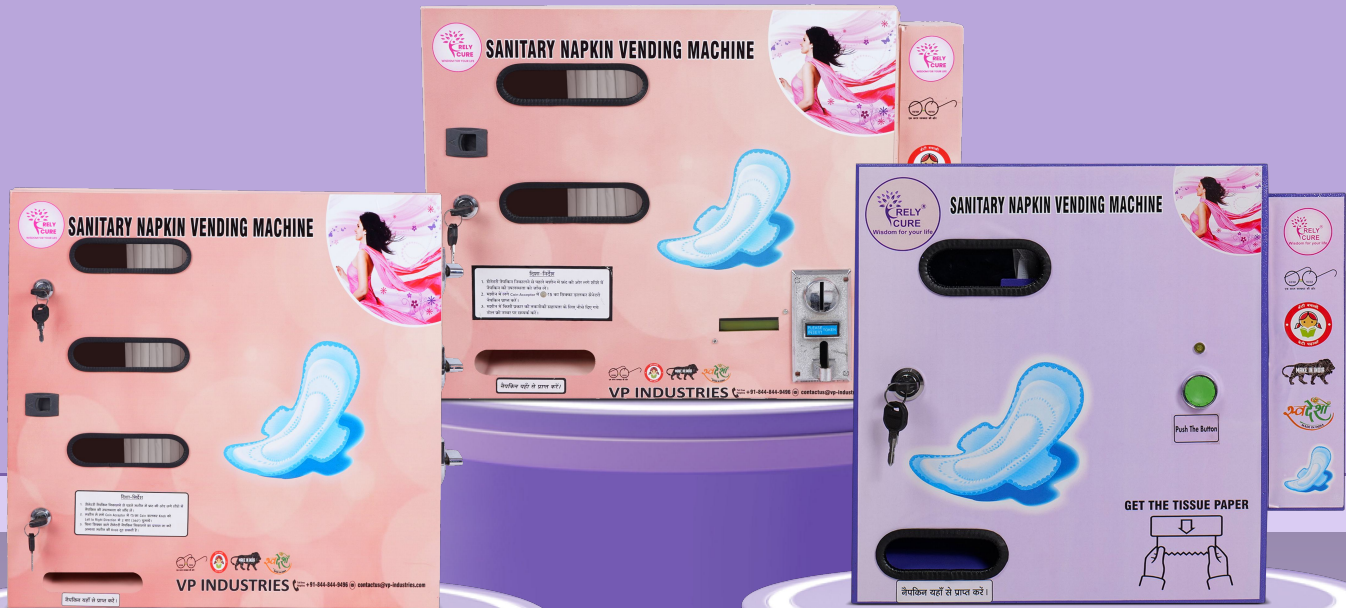


# WOMEN WELFARE HYGIENIC PRODUCTS

AN ISO & CE Certified

MSME CERTIFIED

GEM Registered Supplier



Wisdom For Your Life



# Sanitary Napkin Vending Machine

Wall Mountable & Front loading Pink Color  
Push Button Operated



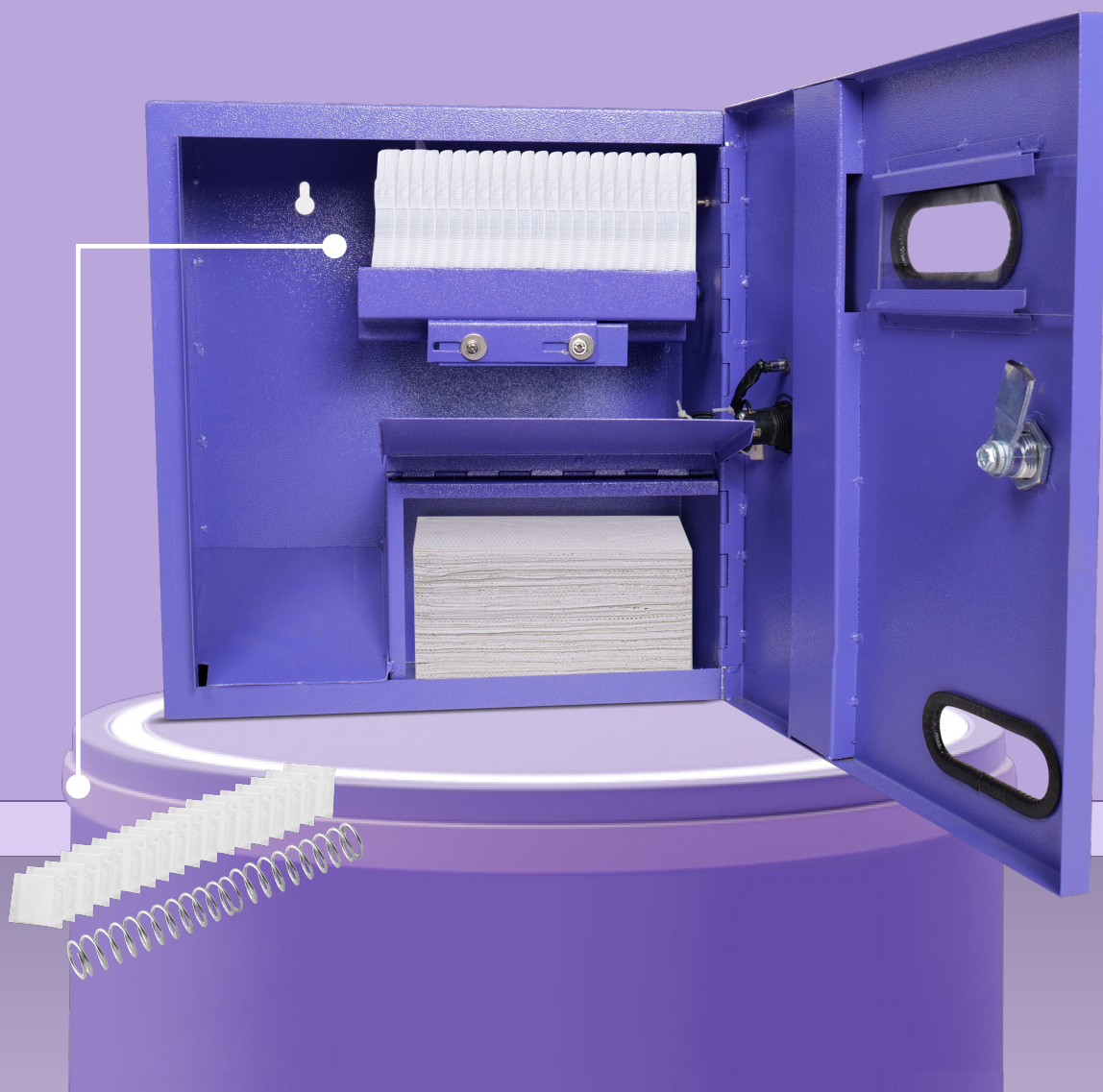


# Storage Capacity 20 PADS

100 Napkins loaded in 3 Spring Spiral Left to right

**01**  
Spring

**1X20**  
PADS





# Machine Features & Specification

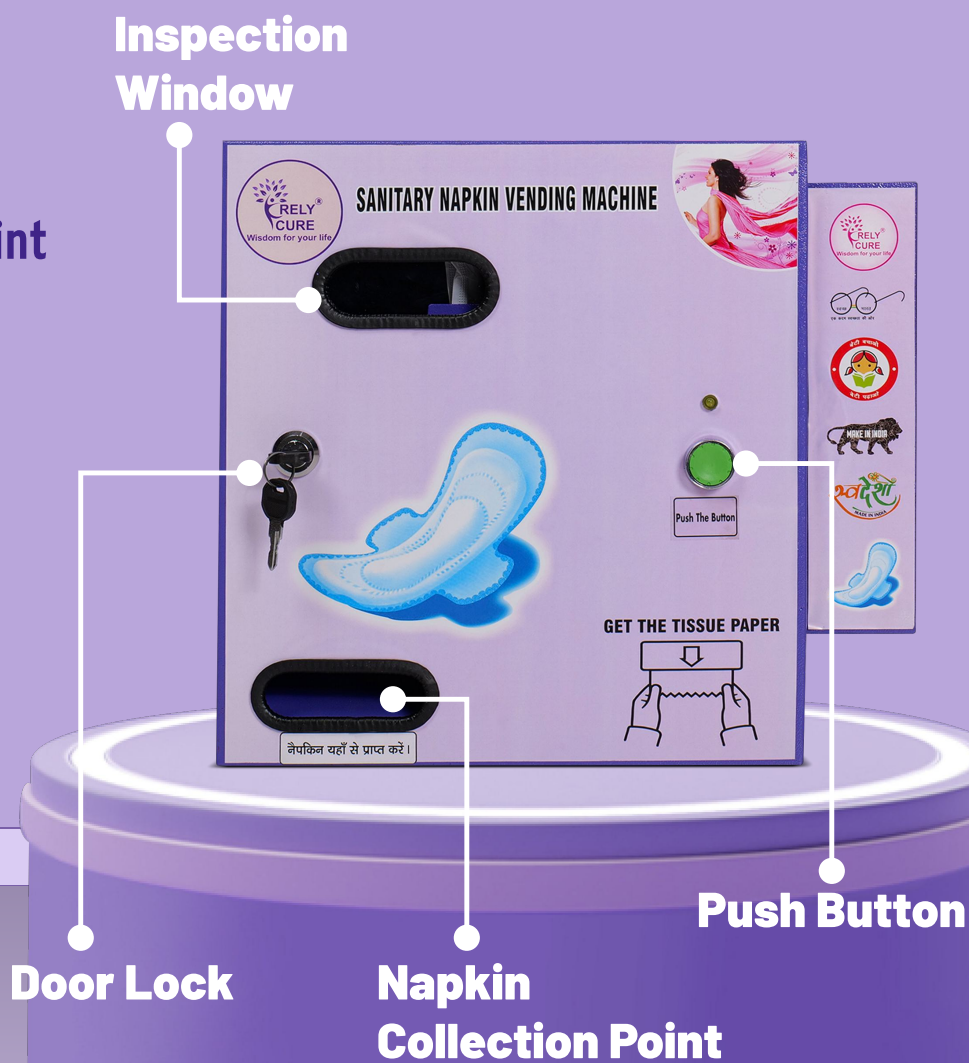
01 Push Button Operated

02 Coin Acceptor

03 Inspection Window

04 Napkin Collection Point

05 Door Lock



# Machine Operating Mechanism

## Instruction for use:

- 01 Electronic Push Button Operated For Free Vending Of Sanitary Napkin
- 03 Push the button and get the napkin without coin
- 04 Currency value Not Required any Coin/Token



# Easy Wall Mountable Using Screw

## Box Component & Accessories:



Sanitary Napkin-30pcs



Wall Plug & Screw-2 pair



User Guide Manual



Door Lock Keys-2 pc



# More Information



Mode Of Function	Push Button Operated
Currency Value	Not Required
Napkin Type	Any Size Of Trifold
Napkin Refilled Method	Direction All Spring Spiral Provided
Stock View	Provided Visibility Windows Of Napkins Operated With
Machine Material	Mild Steel Body With Epoxy Anti Rust Proof Powder Coated For Superior Finish
Power Consumption	Electricity Required 5 Amp Socket Plug In (220V)
Accessories Included	20 Sanitary Pads, 2 Nos Pvc Wall Plug With 2 Nos Screws, 2 Nos Of Keys And User Manual)
Type Of Packaging	Packing Of Thermocol And Carton Cardboard Fitment Box
Product Offering	To Make Life Easier And Tension Free During Those Days, Just Drop A Coin & Get The Napkin On 24x7 Basis..)
Warranty	1 Year
Easy To Installation	With The Help Of Mounting Accessories Provided , Hang The Machine On Wall & Start Collecting The Napkins.
Customer Support	Available By 24x7 Basis





*Thanks for  
connecting us...*

Office & Manufacturing Unit:

A0-91, Amrit Steel Compound, South Side Industrial  
Area, Ghaziabad-201001

**AN ISO & CE Certified**

**MSME CERTIFIED**

**GEM Registered Supplier**

 **+91-8512895000**



 **+91-9560532288**

